



Welcome to our Christmas Newsletter

We are very pleased to be publishing our company newsletter this Christmas, in which we will be sharing our most interesting challenges, projects and other company/individual ventures of 2018, so thank you for reading and enjoy.

2018 has been an exciting year for us, with new additions to the team, the growth of our CSR & Business Development initiatives and an increasing variety of projects across multiple sectors in the industry.

Our projects have ranged in scope from small residential refurbishments to entire manufacturing facilities and we have successfully continued our work in the residential, education and pharmaceutical sectors where we have long been established, with schools and universities in London and Kent.

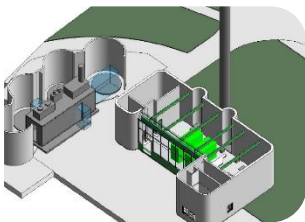
In addition to the project work, in June, W&P initiated the first year of our new work experience programme, which proved to be of enormous benefit both to the business and the students who joined us.

Other highlights include the successful award of the ISO 9001:2015 Certification and recognition as a Top 10 SME in community investment at the GivX annual awards.

We are excited to carry this momentum through to 2019 and continue finding inspiration for both ourselves and others in the coming year.

PROJECTS

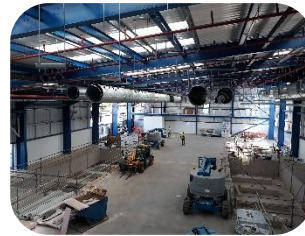
CHP Works – University Campus



Linked to a major project to introduce Combined Heat & Power (CHP) serving an extensive university campus in Kent, an impact study and Stage 2

design of twenty three plant rooms has been undertaken. The initial study period included validation of heating loads for all buildings served in a condensed period working closely in collaboration with client, project managers and CHP specialists.

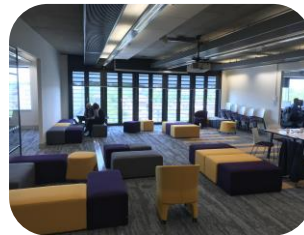
Factory 2 Expansion - Croydon



As the lead consultant on a new manufacturing facility scheme that is currently under construction, W&P have worked well to deliver a full

design within a challenging timescale to allow completion of works by January 2019. From production facilities to offices, W&P have demonstrated our experience and knowledge of the site that has seen a project go from concept to reality in under 18 months. Other projects of similar scale are on the horizon and we relish the chance to meet the challenges they will present.

Press Centre – East London



Another success story has been the Scope Press Centre at Stratford's Queen Elizabeth Park. We undertook a design audit exercise for the relocation of the

charity's Press centre. W&Ps' professionalism and experience in communication management ensured that client expectations were exceeded and a new vibrant working space was provided for staff.

Station Platform Lighting Design – Tulse Hill



Continuing our work in the rail industry, the electrical team designed new canopy lighting, improving light spill performance by 40% through use of

innovative 3D modelling and calculation. This has greatly improved platform lighting for commuters and successfully gained F003 approval from Network Rail. To celebrate, the team will be tucking into a fantastic cake courtesy of Paul Botje and Cakes Today

CSR & THE WILSON & PARTNERS VISION

Sustainability Objectives

Sustainability has long been important to Wilson & Partners and now it is absolutely central to our overall business vision.

Our in-house Sustainability Team and nominated champions support our progress in W&P's Three Pillars of Sustainability:

- Sustainability in Design
- Sustainability in People
- Sustainability in Community

To promote the work of our champions, W&P published the first of 6 articles in our "Sustainability Series" in September 2018 and are busy collating the next issue for Spring 2019. Through the series we are looking to address sustainability throughout the industry and offer interesting ideas that we all can get behind. If you want to be part of our Sustainable Community, let us know at Emily.bentley-leek@wilsonpartners.co.uk.

Summer Work Experience

During the summer we enrolled four students currently studying for their A Levels onto the first year of our work experience programme which proved a great success. The students were with us for a week in July and were introduced to various aspects of building services through the mentoring of our CSR champions and technical staff. To ensure our students got the most value out of their week, we organised:

- Multiple site visits
- Training in industry software
- Involvement in real projects & designs

Delivering Social Value

In September, W&P were recognised as a top 10 SME by GivX for our investment in communities. Since the award, we have been looking to address the issue of social mobility through our Work Experience programme that seeks to target students from disadvantaged backgrounds. Through our partnership with Generating Genius, we have significantly extended our reach within the London communities and in parallel with the profile of professional services in construction, hope to develop these relationships further. We are a small business, so it is critical that we maximise our impact – and a small business doesn't have to only do small things!



David Pullen (Managing Partner) with Steph Wicken (Business Support & CSR Manager) receiving the GivX Award

THE TEAM

New Starters

We have been delighted to welcome two additions in 2018, Nathaniel Gooden as a Senior Mechanical Engineer in our Sandwich office and Emily Bentley-Leek as Business Development & Admin Support in London. Both Nat and Emily have brought with them great passion, ideas and energy, and have become actively involved in the Sustainability Team.

Charity Activities: Steve and Steph

Outside of the office, two of our team engaged in sponsored sports for charity; Steve doing a 10-mile run for Breast Cancer Now and Steph an 8-mile row for young people's charity AHOY.



Left: Steph Wicken's team raised over £2k for the AHOY centre, a charity that offers life skills courses to children and young people from disadvantaged backgrounds or with disabilities.

Right: Steve Castle (Senior Electrical Engineer) with son Tom after their 10-mile CliffTop Challenge run for Breast Cancer Now.



And Happy New Year from all at Wilson & Partners LLP